

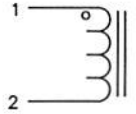
The information contained in this drawing is the sole property of Coil Winding Specialist, Inc. Any reproduction in part or whole without written permission of Coil Winding Specialist, Inc. is prohibited.

DIMENSIONAL TOLERANCES INCHES [MM]

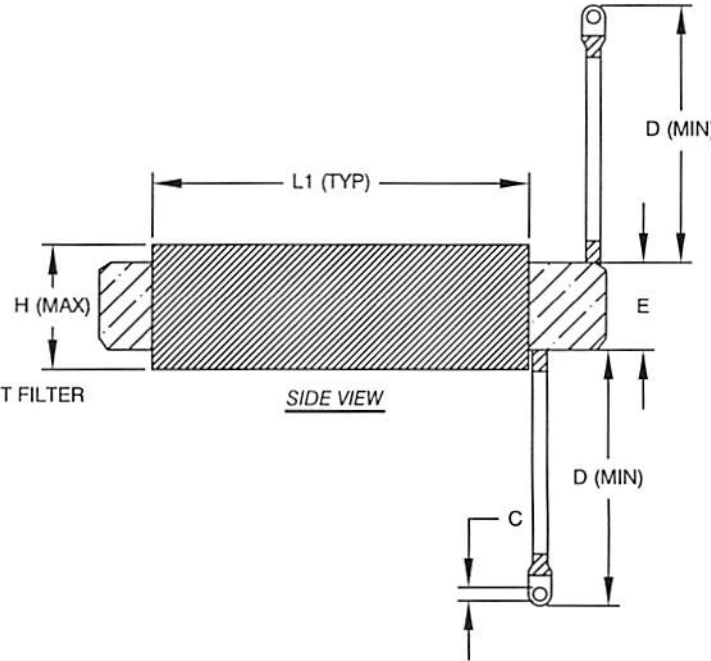
C	D	E	F	G	L	L1	W	H
0.50 [12.70]	21.65 [550.00]	2.25 [57.15]	2.00 [50.80]	0.68 [17.27]	15.50 [393.70]	10.50 [266.70]	5.00 [127.00]	5.00 [127.00]

REVISION HISTORY

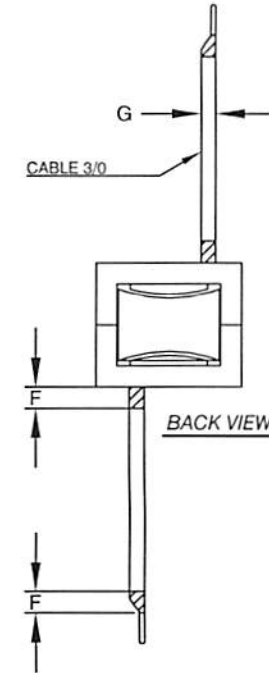
REV	ECN	DESCRIPTION	SIGN & DATE			
			BY	DATE	CHK	DATE
A		PRODUCTION RELEASE	JL	08/11/17	JL	08/11/17
B		UPDATED DIMENSIONS	JL	08/24/17	JL	08/24/17



SCHEMATIC



SIDE VIEW



BACK VIEW

DC-BIAS	L
0A	71uH
20A	71uH
40A	71uH
60A	71uH
80A	70uH
100A	70uH
120A	69uH
140A	69uH
160A	68uH
180A	67uH
200A	66uH
220A	65uH
240A	64uH
260A	63uH
280A	62uH
300A	61uH

- 9 APPLICATION: OUTPUT CHOKE, HIGH CURRENT INDUCTOR, INPUT FILTER
- 8 BUILT TO RoHS COMPLIANCE

7 LABEL PART NUMBER AND REVISION WHERE SHOWN

6 DIMENSION F = HEAT SHRINK 2"

VARNISHED AND CURE  
5 APPLY SILICON IF REQUIRED

WRAP TAPE AROUND CORES  
WITH CORES AND NOMEMX  
PRE FORMED FLAT COPPER SHEETS

4 CONSTRUCTION:

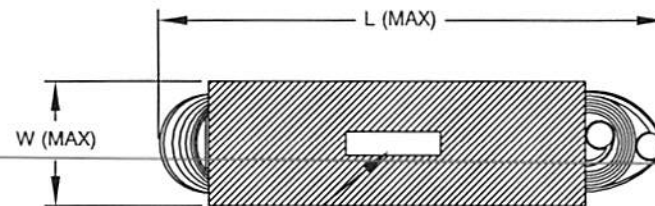
WEIGHT: 36 LB (Typ)  
RECOMMENDED AMBIENT OPERATING TEMP: -40°C TO 105°C  
HI-POT TEST FROM WINDING TO CORE 1000VDC @ 2mA, 1 MIN  
INTERWINDING CAPACITANCE @ SRF = 180pF (TYP)  
|Z|@SRF=8.25 KILO-OHM  
SRF=1.44 MHz  
RATED CURRENT: 300 AMPS, APPROPRIATE AIR FLOW NEEDED.  
DCR= 4 MILLI-OHM MAX.  
L@DC BIAS: SEE TABLE ON RIGHT.  
L=71uH +0%, -15%, MEASURED AT 10 KHz, 0.25V, ZERO DC BIAS

3 SPECIFICATIONS:

BAKE VARNISH  
SILICON DOW CORNING OR EQUAL  
OUTER WRAP: 3M GLASS OR EQUAL

2 CORE: COMPACTED HIGH FLUX CORE

1 MATERIAL: UL RECOGNIZED



TOP VIEW

7

PARTS LIST			
AUTOCAD	X		
SOLIDWORKS			
SIGN	DATE	www.coilws.com sales@coilws.com	
DRWN	JL	Coil Winding Specialist, Inc. 353 W GROVE AVE ORANGE, CA 92865	
DECD	JL	TITLE: High Current Inductor 71 uH, 300 Amps	
ENGR.	JL	SIZE DWG. NO. <b>CWS-1EE-12721</b>	
APPR.	BO	REV <b>B</b>	
SCALE		NOT_TO_SCALE	
SHEET		1 OF 1	

NOTES: UNLESS OTHERWISE SPECIFIED READ FROM BOTTOM UP.

CAGE CODE: 5DME2

UNLESS OTHERWISE SPECIFIED
DIMENSIONING AND TOLERANCE PER ANSI Y14.5M
ALL DIMENSIONS ARE IN INCHES AND [MILLIMETERS].
TOLERANCE INCHES:
.XXX±.010 .XX±.020 <1=±0.30
TOLERANCE METERS:
.XXX±.254 .XX±.51 <1=±0.30
ANGLE PROJECTION
DO NOT SCALE DRAWING